

[JOEFREX][®]

tools with taste & style



*host Milano 2015
October 23_27
Pav. 15 Stand D76/E75*

 **concept-art**
Perfect Espresso & Coffee-Tools

TAMPER GALAXY



yellow



dark brown



cream



azure



red



green



slate



light brown



black

A COSMIC EXPERIENCE FILLED WITH FUN AND COLORS!

Embark on an interplanetary trip with our exciting new range of silicone tamper handles

- ergonomic design with "groovy" grip surface
- pleasant to the touch
- compatible with all our tamper bases

Galaxy Sun - yellow

Galaxy Mercury - dark brown

Galaxy Venus - cream

Galaxy Earth - azure

Galaxy Mars - red

Galaxy Jupiter - green

Galaxy Saturn - slate

Galaxy Neptune - light brown

Galaxy Pluto - black

Order N° hgy

Order N° hgd

Order N° hgc

Order N° hga

Order N° hgr

Order N° hgg

Order N° hgs

Order N° hgl

Order N° hgb

...FROM
THE
SOLAR
SYSTEM...
...to the "latte" way...

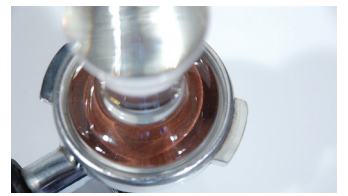


TAMPER CRYSTAL CLEAR 58mm

Material: Glass Order N° tcc58

[JOEFREX]® introduces new perspectives in Espresso preparation: CRYSTAL CLEAR

The innovative glass tamper opens up stunning visual dimensions. Ergonomic, stylish, elegant – aesthetic perfection and transparent functionality are fused into an object of beauty and sophistication.



Stone Age

Handle Stone Age..... Order N° hsm

Material: Marble

Stone Age is the future!

With this uniquely developed Tamper Handle Stone Age, cut and sculpted from Mediterranean marble and smoothened and polished by hand, tamping becomes a completely new sensual experience. Art combined with functionality. (compatible with all our bases)



Iron Age

Handle Iron Age Order N° hib

Material: Solid Aluminum, black anodized

The ultimate tamping experience! This elegant black handle of anodized aluminum, turned and polished to luxurious perfection, conveys at first sight that an exceptional product of innovative proportions has been created. Precision, style and smooth handling generate an enhanced sense of unity and harmony. (compatible with all our bases)



Handle Technic



Black



Silver



Red



Aubergine

Handle Technic Silver
Handle Technic Red
Handle Technic Black
Handle Technic Aubergine

Order N° hts
Order N° htr
Order N° htb
Order N° hta

Material: Aluminum anodized
Weight: 9.2 oz
(compatible with all our bases)



This exceptional tamper handle with its integrated precision release mechanism allows you to reliably set and control the maximal pressure you want for optimal results each time. Our precision engineered pressure limiter can be calibrated within a range of 8 kg to 21 kg (18 lbs to 46 lbs) by adjusting the central screw inside the handle's core. The dynamometric tamper will automatically trigger a click-release once the selected pressure is reached. The handle with its screw-on cap consists of aluminum, the pressure-sensitive mechanism inside is manufactured with stainless steel components.

CAUTION: do not interfere with the two Allen screws at the lower sides of the handle!
Do not put the handle or tamper into a dishwasher!

Handle Pop



Black



Red



White



Pink

Pop Black
Pop Red
Pop White
Pop Pink

Order N° hps
Order N° hpr
Order N° hpw
Order N° hpp



Handle Pop

Material: Aluminum, powder-coated
Weight: 6.4 oz
(compatible with all our bases)

We want your daily work with your tamper to be fun, and therefore Pop is available in a range of lively colors. The rubber disk between base and handle ensures perfect protection and fit.

Handle Elegance



Beech



Maple



Oak



Walnut

Elegance Beech Order N° heb
Elegance Maple Order N° hea
Elegance Oak Order N° hee
Elegance Walnut Order N° hen



Material: Beech, Maple, Oak, Walnut
Weight: 3.6 oz
(compatible with all our bases)

Appealing form and ergonomic simplicity are harmoniously combined here, a balance we proudly call Tamper Handle Elegance.

Handle Classic



Walnut



Walnut short

Handle Classic Walnut Order N° hcn
Handle Classic Walnut Short Order N° hcnk

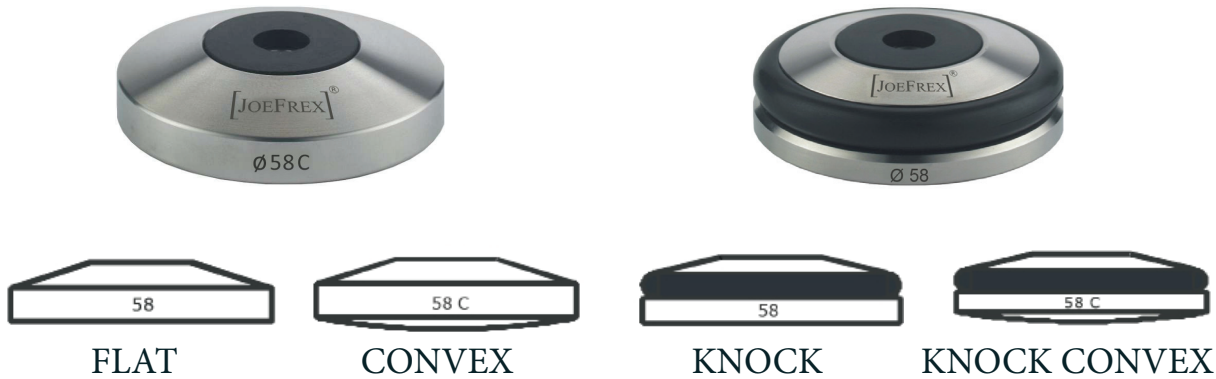
A true classic in our line of tamper handles: walnut hardwood, superbly finished, stained and treated to perfection.



Tamper Metal Alu

Material: Solid Aluminum
Ø 53/57/58 Order N° tma + Ø

This classy espresso tamper is machined out of a solid aluminum rod and captivates by its clear lines and precision. Its quality, compared to other products that are merely cast or poured, is evident in the accurate fit within the portafilter and the perfectly rounded base. As a finishing touch it is finely polished.



Material: Stainless Steel

Flat	Ø 41/45/48/49/50/51/52/53/54/55/56/57/58 mm	Order N° bf	+ Ø
Flat (special sizes)	Ø 48.5/49.5/50.5/51.5/52.5/53.5/54.5/55.5/56.5/57.5/58.5 mm	Order N° bf	+ Ø
Convex	Ø 53/57/58 mm	Order N° bc	+ Ø
Knock	Ø 47/49/51/53/54/55/56/57/58 mm	Order N° bk	+ Ø
Knock Convex	Ø 53/55/57/58 mm	Order N° bkc	+ Ø

Our tamper bases are available in four different varieties and are compatible with our full range of handles. The models Knock and Knock Convex feature a black silicone ring which allows you to safely tap against the edge of the filter to knock off remaining coffee grains before tamping again.



Base Classic Aluminum

Material: Aluminum

Ø 53/55/56/58 mm
Order N° bca + Ø



Base Classic Stainless Steel

Material: Stainless Steel

Ø 48/51/53/54/55/56/57/58/58.5 mm
Order N° bcs + Ø



Tamping Station Stone Age Marble



Exceptional style, elegance and value:

The [JOEFREX][®] Stone Age Line
-Surround yourself with Luxury-
Finest Mediterranean marble, carved and polished to perfection.

Material: Marble, Silicone
Dimensions: W x D x H: 4.3" x 5.3" x 2"
Maße: B x T x H: 11cm x 13,5cm x 5cm

Tamping Station Stone Age Marble Order N° tom

Tamping Station Silicone

To optimize durability and hygiene we have upgraded our popular Tamping Station Exclusive. The top panel is now covered with a food grade silicone mat to facilitate cleaning, and which is easy to replace.

Silicone available in



black



white



red



Tamping Station Silicone

Material: Stainless Steel, Silicone
Dimensions: W x D x H: 4.7" x 7.1" x 3.2"
Maße: B x T x H: 12 x 18 x 8 cm

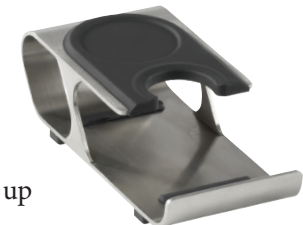
Tamping Station Silicone Black Order N° tib
Tamping Station Silicone Red..... Order N° tir
Tamping Station Silicone White..... Order N° tiw

Tamping Station Exclusive

Material: Stainless Steel, Beech Varnished
Dimensions: W x D x H: 4.7" x 7.1" x 3.2"
Maße: B x T x H: 12 x 18 x 8 cm
Tamping Station Exclusive Black Order N° txs

Our Tamping Station Exclusive is the perfect equipment for professional as well as hobby baristas. The semi-circular portafilter dock with its rubber-coated edge is ideally adapted to provide stability and safety for tamping the coffee grounds. The rubber ring at the rear is a neat place to park your tamper when not in use. All materials and components are hand-finished and precision-tooled. It is compact, solid and easy to use.

Tamping Station Professional up & down



up

Tamping Station Professional up

Material: Stainless Steel, Silicone black
Dimensions: W x D x H: 3.6" x 7.9" x 2.8"
Maße: W x L x H: 9 x 20 x 7 cm

Tamping Station Prof. up Order N° tspu
6



down

Tamping Station Professional down

Material: Stainless Steel, Silicone black
Dimensions: W x D x H: 3.6" x 7.9" x 2.8"
Maße: W x L x H: 9 x 20 x 7 cm

Tamping Station Prof. down Order N° tspd

tspd: the front part overlaps the edge of a work surface



Tamping Mat



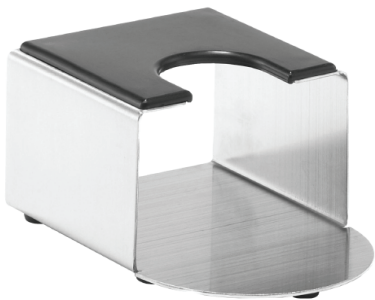
Tamper and Packing Mat Black Silicone
Tamping mat featuring 3mm thick silicone to protect your work surfaces. The food grade silicone is raised to 6mm around the edges to prevent spillage.

Tamping Mat S

Material: Silicone
Dimensions: W x L 5.9" x 7.9"
Maße: B x L 15 cm x 20 cm
Tamping Mat S Order N° tms

Corner Tamping Mat L
Newly developed and improved as an upgraded version of our popular Tamping Mat S, this brand new product features 5 mm thick silicone which is raised to a full 8 mm around the rim to ensure even more stability and surface protection. The 90-degree rigid vertical fold enables you to firmly align the mat with a table or counter top edge for enhanced sturdiness and control.

Dimensions: L x W x H 7.9" x 5.9" x 1.8"
Maße: B x L x H 15 cm x 20 cm x 4, 5 cm
Tamping Mat L Order N° tmL



Tamping Station Classic
Material: Stainless Steel, Rubber

Dimensions: W x L x H: 3.6" x 5.1" x 2.4"
Maße: B x T x H: 9 x 13 x 6 cm
Tamping Station Classic Order N° tsc

Tamping Station Beech
support and protection for tamping
Material: Beech black

Dimensions: Ø 3.2" H: 0.8"
Maße: Ø 8 cm x 2 cm
Tamping Station Beech Order N° tsb

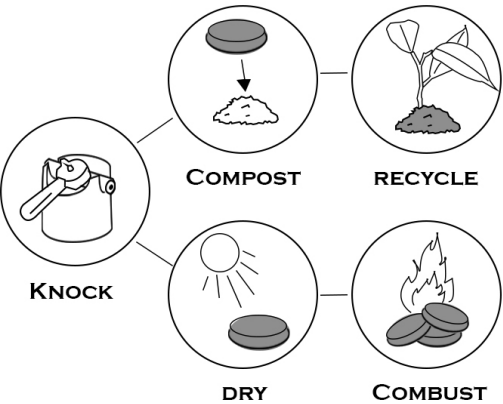
Tamping Mat Round
support and protection for tamping
Material: Silicone

Dimensions: Ø 3.2" H: 0.45"
Maße: Ø 8 cm H: 11 mm
Tamping Mat Round Order N° tmr

Drawer Bases



PUCK = RECYCLED ENERGY

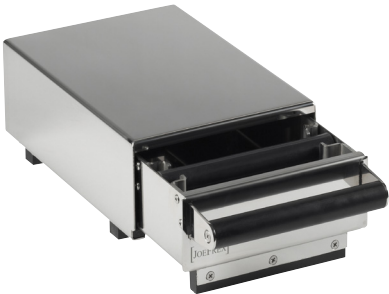


For the efficient and professional disposal of coffee grounds, we recommend our practical knockbox drawers Exclusive for coffee bars and shops, restaurants and hotels, wherever baristas create top quality espresso, cappuccino and latte macchiato. Drawer bases are a perfect and solid support for grinders like Mahlkonig, Mazzer, Nuova Simonelli, Creado, Compak or La Cimbali and save space, are unobtrusive and do not require any kind of installation.

Drawer Base Exclusive Slim

Drawer Base Exclusive Slim

Material: Stainless Steel polished
Dimensions: W x D x H 8.3" x 11.8" x 3.2"
Maße: B x T x H 21cm x 30cm x 8cm Order N° dxslim



Order N° dxSS



Order N° dxS



Order N° dxST

Drawer Base Exclusive

Material: Stainless Steel polished

Dimensions / Maße:	W x D x H	B x T x H	
Drawer Base Exclusive SS	7.9" x 11.8" x 4.4"	20cm x 30cm x 11cm	Order N° dxSS
Drawer Base Exclusive S	9" x 11.8" x 4.4"	23cm x 30cm x 11cm	Order N° dxS
Drawer Base Exclusive ST	9" x 15.8" x 4.4"	23cm x 40cm x 11cm	Order N° dxST



Drawer Base Exclusive S

Drawer Bases Exclusive

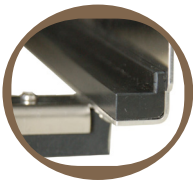


Drawer Base Exclusive M

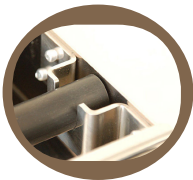


Drawer Base Exclusive MM
Material: Stainless Steel polished
Dimensions: W x D x H 11" x 14.6" x 4.4"
Maße: B x T x H 28cm x 37cm x 11cm
Drawer Base Exclusive MM Order N° dxMM

Drawer Base Exclusive M
Material: Stainless Steel polished
Dimensions: W x D x H 12.6" x 17.7" x 4.4"
Maße: B x T x H 32cm x 45cm x 11cm
Drawer Base Exclusive M Order N° dxM



Slide Rail



Damped Knock Bar
thick silicone with
aluminum core

Drawer Base Exclusive L
Material: Stainless Steel polished
Dimensions: W x D x H 14.2" x 11.8" x 4.4"
Maße: B x T x H 36cm x 30cm x 11cm
Drawer Base Exclusive L Order N° dxL

Drawer Bases Metal



Drawer Base Metal Mini



Drawer Base Metal Mini



Drawer Base Metal S polished



Drawer Base Metal M polished

Drawer Base Metal
Material: Stainless Steel
Dimensions / Maße: W x D x H B x T x H
Drawer Metal mini 5.1" x 8.7" x 3.2" 13cm x 22cm x 8cm Order N° dmini
Drawer Metal S polished 7.1" x 10.6" x 3.6" 18cm x 27cm x 9cm Order N° dsp
Drawer Metal M polished 10.6" x 11.8" x 3.6" 27cm x 30cm x 9cm Order N° dmp

Our economy series Drawer Base Metal is mainly intended for domestic use and features polished stainless steel, a PVC knock bar and rubber bumpers.

Knockboxes



Knock Box Stone Age Marble

Exceptional style, elegance and value:

The [JOEFREX][®] Stone Age Line

-Surround yourself with Luxury-
Finest Mediterranean marble, carved and polished to perfection.

Material: Marble, Silicone, Aluminum

Dimensions: H. 6.1" Ø 5.9"

Maße: H. 15,5cm Ø 15cm

Order N° kom



Red

Material: Plastic, Silicone

Dimensions:

Maße:

Knockbox Basic Red

Knockbox Basic Gray

Knockbox Basic Black

H. 4" Ø 4.8"

H. Ø 10 x 12 cm

Order N° kbr

Order N° kbg

Order N° kbs



Gray



Black

Our sturdy Knockbox Basic is designed to make handling and cleaning fast, efficient and enjoyable. The aluminum knock bar is damped with food grade silicone and is easy to remove from the trendy duroplastic casing, which is dishwasher safe and food grade as well. A silicone ring at the base provides exceptional stability and protects your work surfaces.



Counter Top-Combi

Material: Stainless Steel, Silicone

Dimensions: W x D x H: 13" x 11.8" x 3.2"

Maße: B x T x H: 33 x 30 x 8 cm

Counter top - Combi Order N° ctc

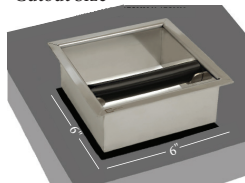
Cutout Size 11.97" x 7.72"



This Knock Box Counter Top Combi with open bottom features also an integrated tamping station and can be installed into a table top or work surface. The tamping station is covered with a food grade silicone mat for hygienic and easy tamping. A waste bin or similar receptacle can be placed underneath the open chute of the knock-out section. The robust aluminum knock bar is coated with thick silicone.



Cutout Size



Knockbox Counter top S

Material: Stainless Steel, Silicone

Dimensions: 6.7" x 6.7" x 2.4"

Maße: 17 cm x 17 cm x 6 cm

Counter top S

Order N° cts

Knockbox Counter top S

This practical knock out chute can be recessed into a work surface or counter and is engineered out of stainless steel. A waste bin or similar receptacle needs to be placed underneath the open chute. The knock bar is made of aluminum and covered with food grade silicone.



Knockbox Counter top M

Material: Stainless Steel, PVC

Dimensions: W x D x H: 6.3" x 6.9" x 3.8"

Counter top M

Order N° kcM

This compact unit was designed for installation into a work surface or bar counter. The casing consists of stainless steel plate. The PVC knock bar is firmly fitted and fixed with steel screws into the closed container, which can be simply lifted out for cleaning. Self-adhesive rubber strips to protect the edges of the cut-out are included.

Knockboxes

For the professional barista as well as home users of espresso machines it is essential to use a stable and solid knockbox for the quick disposal of espresso grounds. The heavier the container, the easier it will be to knock out the espresso puck from the portafilter. Both knock bar and base should be well damped to absorb the impact on tools and work surface.



Knockbox Metal Exclusive

Material: Stainless Steel brushed
Dimensions: W x D x H 6.3" x 8.7" x 4.4"
Maße: B x T x H 16 x 22 x 11 cm
Knockbox Metal Exclusive Order N° kme

Our top-of-the range model Knockbox Metal Exclusive has been especially conceived for restaurants and bars. Its capacity is close to a gallon and it weighs 6.2 lbs. Two massive rubber blocks at the base ensure maximum stability and surface protection.



Knockbox Metal M

Material: Stainless Steel
Dimensions: W x D x H 5.5" x 7.3" x 4.7"
Maße: B x T x H 14cm x 18,5cm 12cm
Knockbox Metal M Order N° kmm

This knockbox is extremely well damped for noise reduction and shock absorption, with its metal knock bar coated in thick silicone and its anti-slip rubber base. The professional design in stainless steel makes it a perfect match with most coffee machines and grinders.



Knockbox Metal S

Material: Stainless Steel
Dimensions: W x D x H 4.7" x 4.7" x 5.5"
Maße: B x T x H 12 x 12 x 14 cm
Knockbox Metal S Order N° kms

This compact and practical knockbox is one of the most popular in our range. Its thick non-slip rubber base and the inserted PVC container, which is easy to remove by lifting the wooden knock bar, make it fun to use and also safe for your work surface.

A Real Classic

In 1996 we created this robust, simple but appealing wooden knockbox with its inserted PVC container as our very first product. It has been a favorite with our customers ever since.



Black



Brown

Material: Wood / PVC
Dimensions: W x D x H: 5.5" x 5.5" x 5.5"
Maße: B x T x H: 14cm x 14cm x 14cm
Knockbox Classic Black Order N° kcs
Knockbox Classic Brown Order N° kcb



Milk Pitchers

It is essential that your milk is always cold and fresh! Choose the appropriate size from our pitchers (12oz/20oz/32oz/48oz) because you can never re-use milk which has already been steamed. The two main phases of steaming milk are the so-called stretching, which introduces air, and the rolling phase, which blends the air with the milk to achieve the fine micro-foam. Make sure to never heat up the milk foam beyond 150°F. Our milk pitchers are designed and shaped to create smooth milk foam for cappuccino and latte macchiato. Their spouts

- Milk Pitchers
- for easy and smooth frothing

- ideal spout for Latte Art

- dish washer safe
- Material: Stainless Steel,
powder-coated



350ml 12oz Order N° mk03a
590ml 20oz Order N° mk06a



350ml 12oz Order N° mk03b
590ml 20oz Order N° mk06b



350ml 12oz Order N° mk03r
590ml 20oz Order N° mk06r



350ml 12oz Order N° mk03g
590ml 20oz Order N° mk06g



350ml 12oz Order N°mk03y
590ml 20oz Order N° mk06y



350ml 12oz Order N°mk03w
590ml 20oz Order N° mk06w

Material: Stainless Steel

Milk Pitcher	350ml	12 oz	Order N° mk03
Milk Pitcher	590ml	20 oz	Order N° mk06
Milk Pitcher	950ml	32 oz	Order N° mk10
Milk Pitcher	1400ml	48 oz	Order N° mk14



Milk Pitcher with inscription



It is an important aspect to supply your customers with the appropriate and preferred dairy products. We make this easy for you with our laser-inscribed milk pitchers.

12 oz 350ml	
SOY MILK	Order N° mk03s
LACTOSE FREE	Order N° mk03l
SKIMMED MILK	Order N° mk03f

20 oz 590ml	
SOY MILK	Order N° mk06s
LACTOSE FREE	Order N° mk06l
SKIMMED MILK	Order N° mk06f



Milk Jug 90ml 3 oz
Order N° mk01

Latte Art

Latte Art is a method of preparing cappuccino and latte macchiato by pouring steamed milk from a frothing pitcher into a shot of espresso, creating elaborate patterns and designs like trees, flowers or hearts on the foamy surface. Special tools such as milk pitchers, pens or stencils are used for drawing the designs into the milk froth, often in combination with sauces, syrups or chocolate powder. The shape and spout of our steaming pitchers are perfect for Latte Art.



Material: Stainless Steel, Silicone grip
 Dimensions: 0.4" x 8.3"
 Maße: 10 mm x 21cm

Latte Art 3 pcs. Set Order N° xset
 Latte Tool Spoon-Lance Order N° xsl
 Latte Tool Knob-Hook Order N° xkh
 Latte Tool Spatula-Spike Order N° xss



Latte-Pen
 Material: Stainless Steel
 Dimensions: 0.5" x 6.7"
 Maße: 12mm x 17cm
 Latte-Pen Order N° xpen



Material: Stainless Steel
 Content: 600ml 20oz
 Cappuccino Creamer Order N° cc06



Material: Stainless Steel
 Dimensions: Ø 3" H. 3.8"
 Maße: Ø 7,5 cm x H 9,5 cm
 Chocolate Shaker Maxi Order N° xcdm



Material: Chrome-plated Metal, Acrylic
 Dimensions: Ø 2.2" H. 4.2"
 Maße: Ø 5,5 cm x H 10,5 cm
 Chocolate Shaker Order N° xcd



Chocolate Bottles

Our Latte Art bottles come in two convenient sizes and are perfect for applying sauces and liquids with great precision.

Content: approx. 0.9 fl oz
 Dimensions: Ø 1.2" H. 4"
 Maße: Ø 30mm H. 10 cm
 Inhalt: ca. 25ml
 Latte Art Bottle Order N° xbo

Content: approx. 8.5 fl oz
 Dimensions: Ø 1.2" H. 4"
 Maße: Ø 50mm H. 18 cm
 Inhalt: ca. 240ml
 Latte Art Bottle Order N° xbom



Filter Coffee



AeroPress Coffeemaker
AeroPress Order N° fap

Quick and easy! 1-4 cups
Stir coffee and hot water for 10 seconds.
Press gently down for 20 seconds.
Add more hot water for smooth American
coffee or hot milk for a delicious latte.

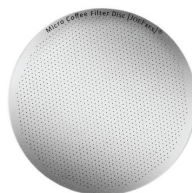


French Press Coffeemaker
Material: Glass
Order N° fp06

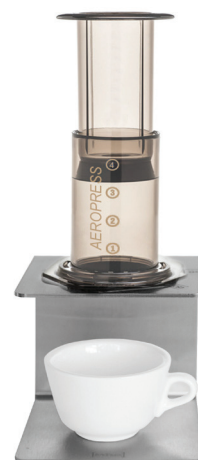


Drip Kettle
Drip Kettle for refilling drip filters
capacity: 20 fl oz

Drip Kettle Order N° bke



Micro Coffee Filter Disk
Material: Stainless Steel
Ø 62mm - for AeroPress Order N° mcf



Filter Dripper with start / stop function
Filter Dripper Order N° fdp



Drip Station for AeroPress
and Filter Dripper
Material: Stainless Steel
Drip Station Order N° fds



Cupping Spoon
Material: Stainless Steel
Cupping Spoon Order N° scu
an elegant and useful accessory for coffee tasting



Coffee Measuring Spoon with clip
Material: Stainless Steel
Length: 7" Länge: 17cm
Order N° xkmc



Cups, Mugs



Espresso Cup

Espresso Cup with Saucer
Content / Inhalt: 2.8 fl oz / 80 ml
Material: porcelain
6 pcs. Order N° sec6

A bell-shaped espresso cup in classic Italian style. The thickness of the china keeps the espresso nicely hot. The bottom is well rounded to optimize the development of the crema.

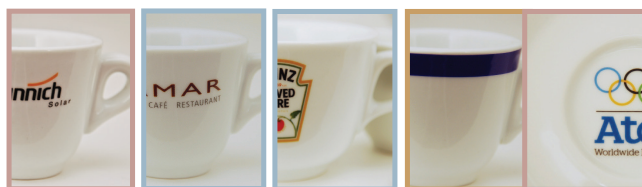


Cappuccino Cup

Cappuccino Cup with Saucer
Content / Inhalt: 6.5 fl oz / 190 ml
Material: porcelain
6 pcs. Order N° scc6

A bell-shaped cappuccino cup in classic Italian style. Its thick-walled design preserves heat well. The rounded bottom ensures a sublime crema and makes it ideal for Latte Art.

For orders of 54 cups or more we can apply your individual logo to the cups and/or saucers. You can choose up to four different colours, and your design will be executed as resistant burn-in applications rather than superficial prints. Prices depend on order quantities.



Espresso Spoons

Material: Stainless Steel
Dimensions: L. 4.3"
Maße: L. 108 mm
set of 6 Order N° ses6



Cappuccino Spoons

Material: Stainless Steel
Dimensions: L. 5.5"
Maße: L. 140 mm
set of 6 Order N° scs6



Latte Macchiato Spoons

Material: Stainless Steel
Dimensions: L. 8.3"
Maße: L. 210 mm
set of 6 Order N° sls6



Table Waste Bin

Material: Stainless Steel
Dimensions: Ø 4.7" H. 6.7"
Maße: Ø12 cm H. 17 cm
Table Waste Bin Order N°sta

A neat and elegant way to keep your counter, bar or table tidy.

Tray S

Material: Stainless Steel
Dimensions: 8.7" x 6.3"
Maße: 22 cm x 16cm
Platter S Order N°spS

Classic oval tray for serving drinks or cups



Tea Box

Material: Lacquered Wood
Dimensions: 9" x 6.1" x 3.6"
Maße: 23 cm x 15,5 cm x 9 cm
Tea box Order N° xte



This elegant wooden box provides a perfect and well-organized storage and presentation system for tea bags, with its six separate compartments for your tea selections.

Coffee Bean Silo

Elegant stainless steel coffee bean silo with chute. The flap at the top, which features an exchangeable label, opens for easy refilling. The display window below it can be independently stocked with coffee beans and easily removed for cleaning. The chute at the bottom is for easy dispensing, the inversed cylinder right above it allows you to pour back any excess beans. Can also be wall-mounted.

Coffee Bean Silo
holds approx. 21 lbs

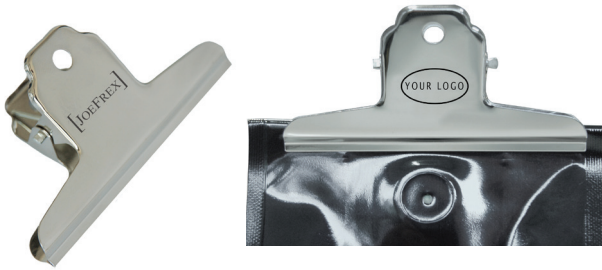
The price and measurements refer to a **single** empty unit.

Material: Stainless Steel
Dimensions: W 6.7" x H 30" x D 10.9"
Maße: B. 17 cm x H. 76 cm x T. 27,5 cm
Order N° rks



Keep it fresh!

Coffee Bag Clip – a practical and fast way to seal open coffee bags and keep the content fresh



Material: Stainless Steel
Length: 4" Länge: 10cm
3 Coffee Bag Clips Order N° clip3

CLIP24 – a set of 24 coffee bag clips, customized with your own company logo
Order N° clip24

Hobbock 8 gallons Order N° rhb



Our hobbocks are sealable metal containers, ideal for transportation and storage of coffee beans.

They feature a food-grade coating on the inside and two solid flap-up handles for carrying.

Content: 8 gallons / 30 Liter (for approx. 10kg coffee)

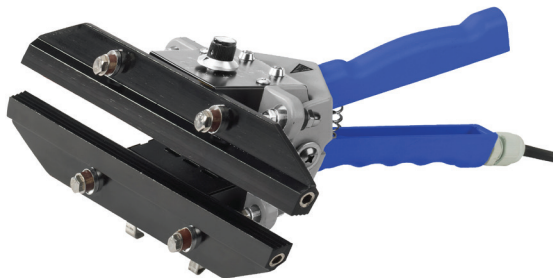
Dimensions: Ø 13.4" H 15.8"

Maße: Ø 35cm H. 40cm
(sold empty)



Weighing Scoop

Material: Stainless Steel
Dimensions: L. 11.6"
Maße: L. 29,5 cm
Content: 12.3 fl oz
Order N° rsc



Heat sealer 300W / 220V Order N° rsz

Heat Sealer (hand-held) for a hygienic and hermetic sealing of suitable materials such as coffee bags.

sealing length: 8" 200mm

sealing width: 0.4" 10mm

Pre-heats in less than two minutes



Bean Sampler

Material: Stainless Steel
Dimensions: Ø 1" L. 20.5"
Maße: Ø 25mm L. 52cm
Bean Sampler Order N° rps

This stainless steel tool allows the extraction of bean samples without damaging the jute bag.



Barista Case



Dimensions: 16.6" x 12.6" x 7.5"
 Barista Case empty: Order N° xbc
 Barista Case stacked: Order N° xbcv



Pressure Gauge Kit
 for portafilters with 3/8" thread
 Material: Stainless Steel, Plastic
 Dimensions: Ø 1.6" x 3" Order N° xsm



Thermometer

with clip and plastic sheath
 (gauge in °Celsius!)
 Material: Stainless Steel, Plastic
 Dimensions: Ø 1.2" L. 5.9"
 Maße: Ø 3cm L. 15cm
 Thermometer Order N° xth



Timer Order N° xti
 This timer allows to measure precise brewing times for espresso, coffee or tea. It features count-down and count-up functions and a large LCD display. (attaches magnetically/battery included)



Digital Scale
 Material: Plastic, Stainless Steel
 Dimensions: 3.2" x 4.3" x 0.8"
 Maße: 8cm x 11cm x 2cm
 Digital Scale Order N° xwa
 Display in g or oz / tare function
 (battery included)
 Max: 500g
 Accuracy: 0.1g

Espresso Shot Glass



Material: Glass
 Dimensions: 1.8" x 1.8" x 2.6"
 Maße: 4,5 cm x 4,5 cm x 6,5 cm
 Order N° xsg



(battery included)
 Max: 300g
 Accuracy: 0.1g

Spoon Scale Order N° xsw

This device enables you to weigh the exact amount of coffee grounds you need for your shot. It displays grams or ounces, has a tare function and automatic switch-off.



BARISTA TOOL BAG



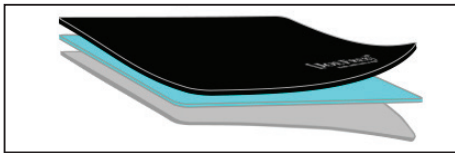
(bag sold empty)

Brand-new Barista Tool Bag in black or maroon (brown), The bag is made out of microfiber and provides a perfect way to carry your favorite barista tools, like milk pitchers, tamper, Latte Art accessories etc.

Dimensions: 10" x 9" x 3.5"
 Maße: 25cm x 22cm x 9cm
 Barista Tool Bag Black Order N° btbb
 Barista Tool Bag Maroon Order N° btbm

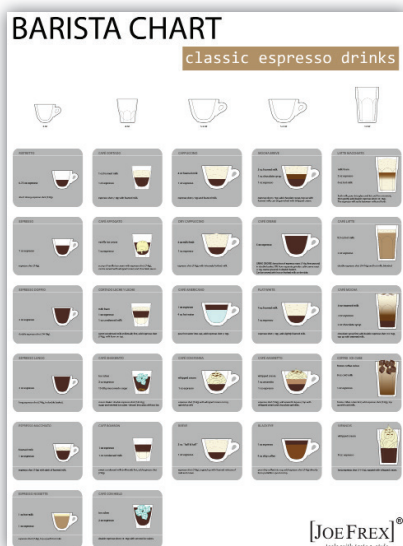
OUR NEW BARISTA STEAM CLOTH IS UNIQUE:

black microfiber layer
 integrated silicone layer
 white microfiber layer

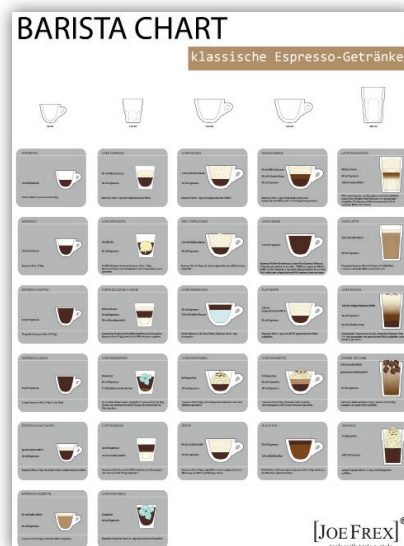


It consists of 3 separate layers made out of microfiber and silicone. The white side is for wiping the steam wand and the dark side to clean surfaces and other parts of the machine. The special integrated silicone layer prevents steam and hot water from penetrating the cloth and enables you to wipe the steam wand while steaming.

Dimensions: 8" x 8"
 Maße: 20cm x 20cm
 Barista Steam Cloth Black Order N° bscb
 Barista Steam Cloth Maroon Order N° bscm



Barista Wall Chart English



Barista Wall Chart Deutsch

Barista Chart:
 A trip around the world of exciting espresso drinks and mixtures at one glance !
 Check out this stylish and decorative overview of all important and popular Espresso drinks which features easy-to-follow professional recipes and well-illustrated ingredient listings with clear instructions.

Dimensions: 39" x 28"
 Maße: 98cm x 70cm

Barista Chart English Order N° pla
 Barista Chart Deutsch Order N° plad





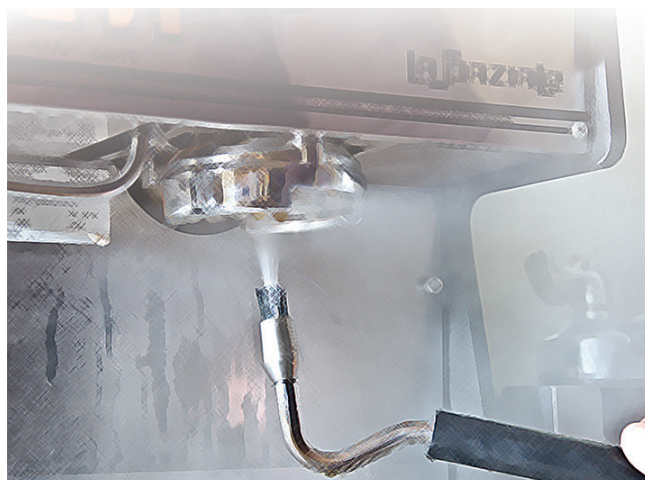
Steam Brush

Material: Stainless Steel, Silicone
 Dimensions: Ø 0.6" L. 9" (handle)
 Maße: Ø 1.5 cm x 23 cm
 Length of hose: 23.5"
 Steam Brush Order N° csb

Steam brush for removing persistent stains and coffee residue.
 Easy connection to the steam wand of your machine.



comes with two replacement bristles and a set of adaptors.



It is vital to maintain and clean your equipment regularly for optimal results. Our special brushes and utensils will make this task much easier and more effective for you. Why not give them a try?



Group Cleaning Brush Exclusive

Material: Aluminum, Nylon
 Dimensions: Ø 0.7" L. 7.9"
 Maße: Ø 1.6 cm x 20 cm
 Group Cleaning Brush Exclusive Order N° cbe



Group Cleaning Circular Brush

Material: Aluminum, Nylon
 Sizes:
 f. Ø 41mm - 52 mm ccS
 f. Ø 53mm - 55 mm ccM
 f. Ø 56mm - 58 mm ccL
 Circular Brush S Order N° ccS
 Circular Brush M Order N° ccM
 Circular Brush L Order N° ccL



Grinder Cleaning Brush Maxi

Material: Wood, Natural bristles
 Dimensions: L. 8.3" W. 1.5"
 Maße: L. 23 cm, B. 4 cm
 Order N° cbum



Cleaning Brush Basic

Material: Plastic, Nylon
 Dimensions: L. 6.7"
 Maße: 17 cm
 Black Order N° cbb
 Red Order N° cbr

Grinder Cleaning Brush

Material: Wood, Natural bristles
 Dimensions: L. 6.7"
 Maße: L. 17 cm
 Order N° cbu





clean your machine

cleanyourmachine.com

Professional Coffee Machine Cleaners

We deem it very important to provide you with the best available cleaning products for your machines and grinders. Therefore we decided to develop our own range of high quality cleaning products and created: "Clean Your Machine" with premium chemical ingredients. Our cleaners and descalers can be used for all espresso machines and grinders and are eco-friendly. They also feature clear and simple graphic symbols to explain and illustrate their easy application.



Special cleaning powder for coffee machines containing active oxygen

clean powder

Content: 500 g 1.1 lbs
Order N° cp500



Cleaner for coffee grinders mixture of 100% natural ingredients, various cereals

clean grind

Content: 500g 1.1 lbs
Order N° cg500



Milk Frother Cleaner liquid cleaner for steam wands

clean steam

Content: 750 ml 25 fl oz
Order N° cs750



Descaler - Concentrated liquid for coffee machines, with color indicator

clean boiler

Content: 750ml 25 fl oz
Order N° cb750



Test Kit Water Hardness
Content: 15 ml Order N° whp
for approx. 10 applications



Instructions in English, Spanish, German, Dutch, French and Italian included

clean immersion filter

Immersion Filter with granules

Dimension: Ø 1.7" Order N° zit

This immersion filter with granules reduces water hardness and is designed for direct connection to the water supply hose of coffee machines.

Please note: Before using cleaning products always refer to the instructions and recommendations provided by your machine manufacturer!



clean tabs

Cleaning tabs for espresso machines (contains 120 tabs of 1.2g)

Content: 144g 5.1 oz
1 Container 120 Tabs
Carton with 12 containers

Order N° ct120
Order N° ct12012



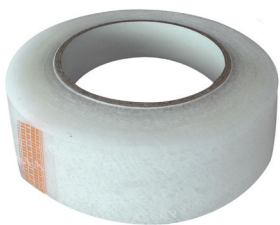


Warning Sign for cleaning
HACCP aid
Order N° wsd



Adhesive packing tape

- transparent, with white coffee theme, pack of 6 rolls
Dimensions: W. x L. x T. 50mm x 100m x 60mic
set of 6 rolls
Order N° tape



Key Chain



Material: Aluminum
Dimensions: Ø 1.2" x 2"
Maße: Ø 3cm x 5 cm



Key Chain Tamper
Material: Zinc Diecast, gunmetal black
Dimensions: Ø 1.2" x 1.8"
Maße: Ø 3cm x 5 cm
Key Chain Tamper
Order N° xsat

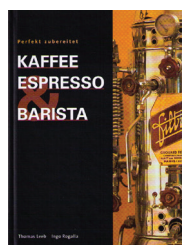


Material: Zinc Diecast
Length: 2"
Länge: 5 cm
Key Chain Portafilter
Order N° xsas

Key Chain Order N° xsa

For orders of 40 xsa key chains or more we will laser-engrave your own logo onto the tampers.

Kaffee Espresso & Barista



Authors: Thomas Leeb
Ingo Rogalla

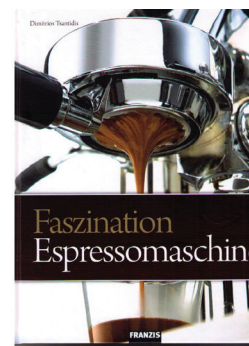
Language: German
Order N° bkeb

Faszination Espressomaschine



Author: Dimitrios Tsantidis

Language: German
Order N° bfe





Steam Wand Brush

Material: Stainless Steel, Nylon
 Dimensions: Ø 0.2" L. 11.8" Order N° cbs
 Maße: Ø 0,5cm L. 30cm



Portafilter Brush
 Material: Stainless Steel, Polyamide
 Dimensions: Ø 0.5" L. 4.8" Order N° cpo
 Maße: Ø 12mm L. 120mm



Material: Stainless Steel

Tableau W. 25 lbs (15.8" x 15.8") (40 x 40 cm) Order N° tab4x4
 Tableau W. 28 lbs (15.8" x 19.7") (40 x 50 cm) Order N° tab4x5



Platform with rotating base (load capacity 80kg)
 - ideal for showroom displays, demonstrations and exhibitions
 - perfect for maintenance and repairs of coffee grinders and espresso machines



Gaskets for:..... Order N°
 Bezzera..... zgdbz
 FAEMA 8 mm..... zgde61-800
 FAEMA 8.5mm..... zgde61-850
 Gaggia 8.5mm..... zgagg-850
 La Spaziale 6.3mm..... zgds-63
 La Spaziale 6.65mm zgds-665
 Rancilio Silvia zgdrs
 WEGA/Elektra/ECM/Rocket/Isomac/La Nuova Era..... zgawe-850

Paper seal rings for:
 large (WEGA, E61) zpdu
 small (La Spaziale)..... zpduk



Replacement Hose
 Material: Silicone Order N°
 Ø 3 mm, Length 50cm zes340
 Ø 4 mm, Length 50cm zes440
 Ø 5 mm, Length 50cm zes550
 Ø 6 mm, Length 50cm zes650



Replacement hoses for machines of various manufacturers. Food grade silicone.

Portafilters & filter baskets



Material: Stainless Steel

1 cup 58mm E61	Order N° zsf1
2 cups 58mm E61	Order N° zsf2
3 cups 58mm E61	Order N° zsf3
1 cup 58mm E61 flat	Order N° zsf1f
1 cup Carimali.....	Order N° zsc1
2 cups Carimali.....	Order N° zsc2
San Marco 1 cup	Order N° zsm1
San Marco 2 cups.....	Order N° zsm2
La Spaziale 1 cup	Order N° zsls1
La Spaziale 2 cups.....	Order N° zsls2

Gaggia Baby Super Emulsione 1 cup	Order N° zse1
Gaggia Baby Super Emulsione 2 cups.....	Order N° zse2

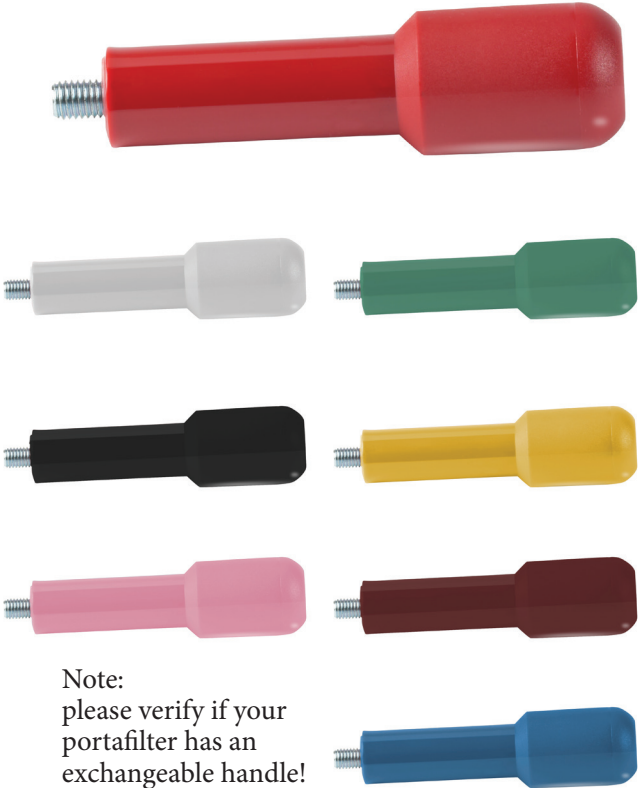
1 cup La Marzocco 58mm.....	Order N° zslm1
2 cups La Marzocco 58mm	Order N° zslm2

Filters for backflushing	
Stainless Steel Blind Filter	Order N° xbs
Rubber Blind Filter.....	Order N° xbsG

Bottomless portafilter with 14g or 21g basket for: Order N°

Bezzera.....	zbsBZ
Dalla Corte	zbsDC
Faema	zbsE61
Gaggia	zbsGG
La Marzocco.....	zbsLM
La Spaziale.....	zbsLS
La Cimbali	zbsLC
Nuova Simonelli	zbsNS
Rancilio.....	zbsRS
San Marco.....	zbsSM
Vibiemme	zbsVBM
Crema Expobar.....	zbsCE
Elektra/WEGA/ECM/Rocket/Isomac/La Nuova Era.....	zbsWE
Astoria older models.....	zbsAA
Astoria newer models (Plus 4 you)	zbsAN

Portafilter Handles



Note:
please verify if your
portafilter has an
exchangeable handle!

Portafilter with single spout (without basket) for:

Bezzera.....	zstBZ
Dalla Corte	zstDC
Faema	zstE61
Gaggia	zstGG
Rancilio.....	zstRS
La Spaziale.....	zstLS
Nuova Simonelli	zstNS
La Cimbali	zstLC
Vibiemme	zstVBM
Elektra/WEGA/ECM/Rocket/Isomac/La Nuova Era.....	zstWE

Handle Red M10 Thread	zgrm10
Handle Red M12 Thread	zgrm12
Handle Green M10 Thread	zggrm10
Handle Green M12 Thread	zggrm12
Handle White M10 Thread	zgwm10
Handle White M12 Thread	zgwm12
Handle Yellow M10 Thread	zggm10
Handle Yellow M12 Thread	zggm12
Handle Black M10 Thread	zgsM10
Handle Black M12 Thread	zgsM12
Handle Bordeaux M10 Thread	zgbom10
Handle Bordeaux M12 Thread	zgbom12
Handle Pink M10 Thread	zgpm10
Handle Pink M12 Thread	zgpm12
Handle Blue M10 Thread	zgbm10
Handle Blue M12 Thread	zgbm12



Handle WOOD Walnut M10 Thread	zggw10
Handle WOOD Walnut M12 Thread	zggw12



Mauritius - Island in the Sun

Customarily, refined white sugar is used in baking and cooking, which is derived from sugar beets and has mostly been chemically treated. This type of refined sugar can also appear “brown”, simply by spraying it with molasses syrup. But we would like to introduce you to a very different kind of natural brown cane sugar, which is derived from the fresh juices of sugar cane plants.

MauiSU offers you a range of exquisite varieties of this 100% natural product, which is rich in vital minerals and vitamins. These either moist or dry cane sugars are unrefined and contain valuable nutrients, whereas ordinary white sugar merely provides energy through its high calorie content.

MauiSU cane sugars are produced using traditional harvesting and processing methods on Mauritius and will lend unique new aromas, flavors and taste experiences to a multitude of dishes, desserts and beverages.



Dark Muscovado 500g.....Order N° mdm

This fine dark brown sugar is an exotic variety of cane sugar, natural and unrefined.

MauiSU Dark Muscovado will bring out new depths of flavor in espressos and coffees and is also the ideal ingredient for marinades, chutneys, sauces and all sorts of desserts. If slightly hardened, just cover with a damp cloth overnight to restore its natural moistness.

Light Muscovado 500gOrder N° mlm

This MauiSU light brown sugar is a classic and distinguishes itself from refined sugars by its soft, fine texture, freshness and subtle flavor. Our Light Muscovado will help you create the best cakes and cookies, or you can simply enjoy its excellence and delicious aroma with your teas and coffees. If slightly hardened, just cover with a damp cloth overnight and its natural moistness will be restored.

Golden Granulated 500gOrder N° mgg

MauiSU Golden Granulated is the unrefined organic alternative to common white refined sugar. Produced in Mauritius with traditional methods to the highest standards, it is perfect for espresso, coffee and tea, or for sprinkling on fresh fruit or cereals.

Demerara 500gOrder N° mde

This superb unrefined Demerara is the perfect complement for espresso, cappuccino and tea due to its rich full flavor. The popular cane sugar from Mauritius, with its large crystals, is also recommended for cake or dessert toppings.

Sugar Crystals 500g.....Order N° msc

MauiSU Sugar Crystals – the ideal way to sweeten your tea while adding new dimensions of flavor and aroma to your favorite drink. This cane sugar is unrefined and 100% natural, produced with traditional methods, and dissolves perfect in your drink.

MauiSU Chocolate Powder 500g.....Order N° mka

Ingredients: cocoa powder, cane sugar. MauiSU Chocolate Powder - our creamy and delicious drinking chocolate. Our unrefined cane sugar from Mauritius provides the unique rich flavor.